

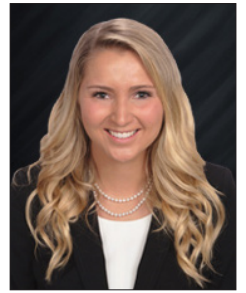
Ashley Tiefel

Associate

(858) 875-4674

atiefel@flockeavoyer.com

License ID: 01984741



Employment:

2015 to Present - Flocke & Avoyer Commercial Real Estate

Associate - Specializing in the leasing and sales of retail space in San Diego, Riverside, and Imperial counties.

Education:

University of Colorado, Boulder, CO

- Bachelor of Science Business Operations Management with a Real Estate Certificate

Affiliations:

Licensed California Real Estate Salesperson

University of Colorado Alumni "C" Club Membership

Active member of University of Colorado Alumni Association

Member of International Council of Shopping Centers

NAIOP (National Association of Industrial and Office Properties) Member

CREW (Commercial Real Estate Women Network) Member

Accomplishments:

Investment Sales:

- Jack in the Box: Brentwood, CA
- Stonecrest Plaza: San Diego, CA

Exclusive Tenant Representation:

- Nekter Juice Bar
- Moe's Southwest Grill

Assisting as the exclusive marketing agent for the following retail properties::

- ±10,337 SF South Coast Center
- ±12,501 SF East County Village
- ±16,000 SF Miramar Village West
- ±25,000 SF South Park Retail Center
- ±43,000 SF San Marcos Civic Center
- ±56,000 SF Westwood Shopping Center
- ±56,204 SF Pacific Beach Marketplace
- ±73,599 SF Alpine Creek Town Center
- ±82,644 SF Castle Park
- ±88,185 SF Jamacha Center
- ±100,000 SF Plaza at the Border
- ±110,678 SF Navajo Jackson Center
- ±117,778 SF EastLake Village Center East
- ±123,000 SF Del Mar Center
- ±241,543 SF East County Square
- ±353,657 SF Town Center North
- ±363,000 SF EastLake Terraces
- ±400,000 SF Temecula Town Center
- ±450,000 SF Pacific Coast Plaza
- ±469,500 SF Stonecrest Plaza
- ±617,000 SF Palm Promenade

